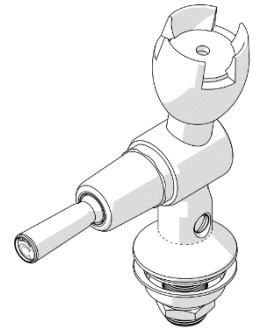


Ezy-Drink[®] CP Lead Safe[™] Vertical Lever Action Drinking Bubbler Tap MI RH

PRODUCT CODE:

- 170.11.34.00



SPECIFICATIONS

- Drinking taps are designed to operate at full mains pressure.
- Rubber mouthguard is designed to help protect teeth while drinking, is resistant to fungal and bacterial attack and has a high resistance to sunlight.
- Adjustable built-in flow restrictor
- Made from Lead Safe[™] DR brass*

IMPORTANT: All Ezy-Drink[®] lever bubbler taps are tested in accordance with AS/NZS 3718 and leave our premises in good working order.

**Our Lead Safe[™] product range is compliant with the Lead-Free Requirements of the NCC 2022 Vol. Three, Clause A5G4(2) and NSF/ANSI 372.*

WARNINGS: Special attention to be paid on notes, photos, images, or drawings of assembly steps marked with the warning symbol.



TECHNICAL DATA

| | | |
|--------------------------------|-------------------|-----|
| Inlet | G ½" - Male | |
| Outlet | Rubber mouthguard | |
| Headwork | Lever action | |
| Working Pressure Range (kPa) | Min | 50 |
| | Max | 500 |
| Working Temperature Range (°C) | Min | 5 |
| | Max | 60 |
| Nominal Flow Rate (LPM) | 2 | |
| Finish | Chrome | |

NOTE: Galvin Engineering continually strives to improve their products. Specifications may change without notice.

TOOLS REQUIRED

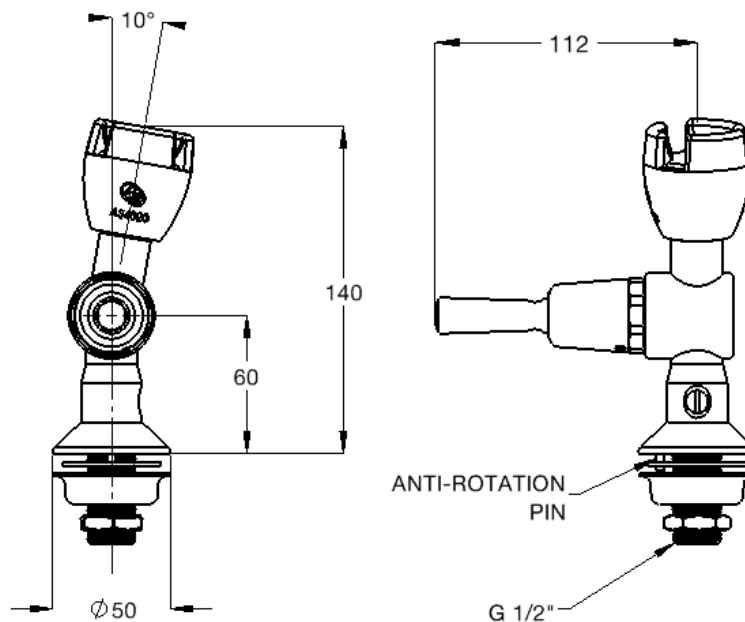
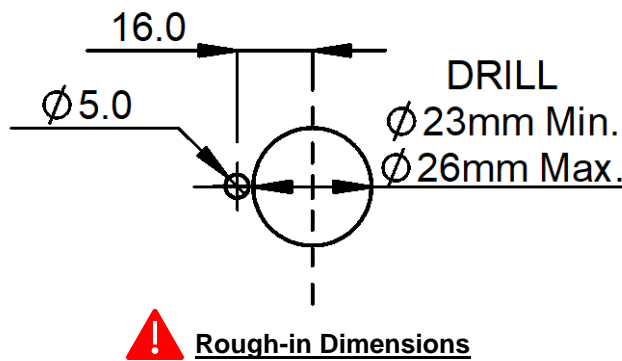
- Power drill
- Spanner or adjustable crescent
- Screwdriver

PRE-INSTALLATION

MOUNTING DETAILS – HOLE CENTRES

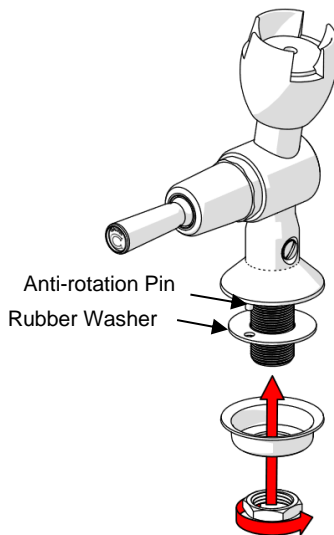
- If the mounting holes do not already exist, mark out and drill the holes in the bench/trough, as shown in rough-in dimensions.
- The alignment of 5mm hole is important, as this will determine the direction of the water flow. Please ensure it is correct in regard to the flow direction before drilling.

Note: Before installation, all lines must be flushed. We recommend that a line strainer be installed prior to drinking taps to eliminate any foreign material.



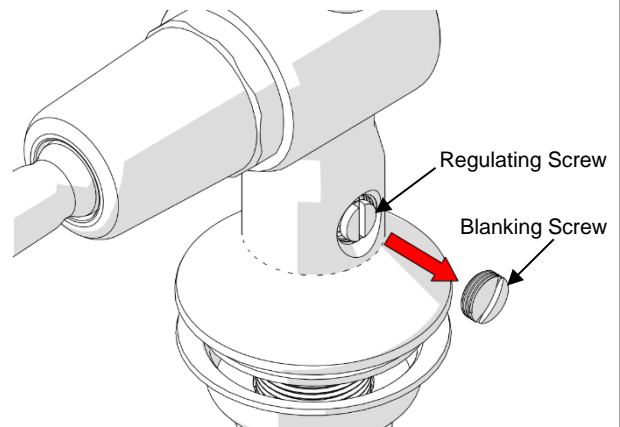
INSTALLATION

IMPORTANT: Galvin Engineering products must be installed in accordance with these installation instructions and in accordance with AS/NZS 3500, the PCA and your local regulatory requirements. Water and/or electrical supply conditions must also comply to the applicable national and/or state standards. Failing to comply with these provisions shall void the product warranty and may affect the performance of the product.



1. Fit tap assembly

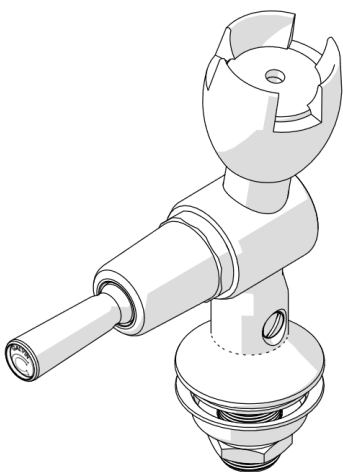
- Fit the outlet into the bench.
- Ensure the sealing rubber washer is placed underneath the outlet body and the anti-rotation pin locates properly.
- Secure underneath with the supplied cup washer and backnut.



2. Flow adjustment

- The water height may be adjusted to suit the available pressure.
- To adjust water flow.
 1. Remove the blanking screw.
 2. Adjust the water height by turning the regulating screw.
 3. Replace blanking screw.

Note: The full range from minimum flow to maximum flow is only ¼ turn.



3. Testing

- Once the drinking tap has been installed, check for leaks and correction operation.

| TROUBLESHOOTING | | |
|-------------------------------|--|--|
| PROBLEM | CAUSE | RECTIFICATION |
| Inconsistent flow | Blocked top assembly | Remove top assembly and clean |
| Water is not flowing from tap | Water is turned off | Turn on water |
| | Blocked flow restrictor | Remove restrictor and clean |
| Continuous flow | Top assembly loose or internally obstructed or damaged | Remove top assembly, clean with water and regrease spindle if required |
| Rate of flow inadequate | The flow regulator screw may not be adjusted correctly | Remove blanking screw and adjust flow regulating screw as described |

WARRANTY

Galvin Engineering products are covered under our Manufacturer's Warranty. Galvin Engineering products must be installed in accordance with the installation instructions and in accordance with AS 3500 and NCC Volume Three, relevant Australian Standards and local authorities applicable to product being installed. Water and electrical supply conditions must also comply to the applicable national and/or state standards, failing to comply with these provisions may void the product warranty and affect performance of the product.

Please visit www.galvinengineering.com.au to view the full warranty, our Installation Compliance and Maintenance & Cleaning information as well as any other additional information.